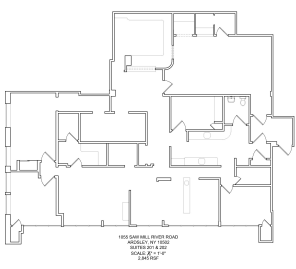
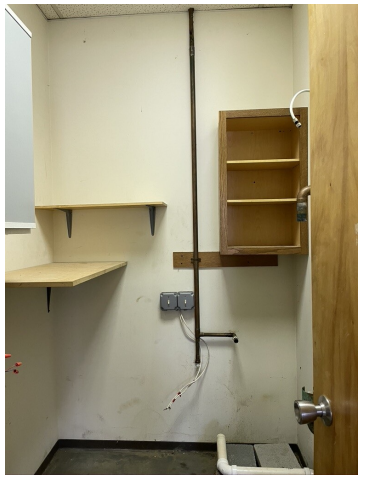


2845 SF Office for Lease in Ardsley, NY

1055 Saw Mill River Rd, Ardsley, NY 10502, USA





Property Overview

Price/Rent PSF	Inquire
Asset Type	Office
Secondary Asset Type	Medical
Trade Type	Lease
SQ. FT. Available	2845.00
Date Available	01/01/2021

Contact



David Perlmutter
Agent

✉ david@perlmutterproperties.com

☎ +1 (914) 262-0026

🌐 www.perlmutterproperties.com

Description

Excellent location near the Saw Mill River Parkway exit in Ardsley.

There is a direct entrance from the parking area to Suite 201/202. The space is 2845 SF and has the plumbing in place for a dental office, but is suitable for any professional use. It has windows on two sides providing lots of great natural light.

The landlord will build out the space to fit the new tenant's needs, including an ADA compliant bathroom.

Watch a video of the interior of Suite 201-202 by copying and pasting this link into your browser: <https://youtu.be/vShDyEGD1zw>

Also available: The 1136 SF Suite LL2: Copy and paste this link into your browser to view LL2:
<https://quantumlisting.com/listings/office-space-at-ardsley-professional-center>

Location



THE INFORMATION ABOVE IS FROM SOURCES WE BELIEVE TO BE RELIABLE. HOWEVER, WE HAVE NOT VERIFIED ITS ACCURACY AND MAKE NO GUARANTEE, WARRANTY OR REPRESENTATION ABOUT IT. IT IS SUBMITTED SUBJECT TO THE POSSIBILITY OF ERRORS, OMISSIONS, CHANGE OF PRICE, RENTAL OR OTHER CONDITIONS, PRIOR SALE, LEASE OR FINANCING, OR WITHDRAWAL WITHOUT NOTICE.